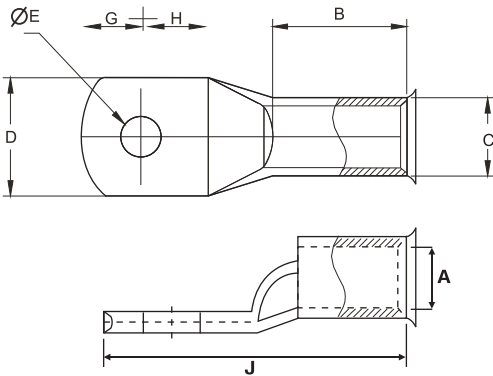


COPPER CABLE LUGS: BELL MOUTH

MATERIAL : ELECTROLYTIC HIGH CONDUCTIVITY COPPER

FINISH : ELECTRO TINNED

FEATURES : WITH OR WITHOUT INSPECTION HOLE



Product Ref.	Size mm ²	Stud Hole E	Dimensions mm						
			A	C	D	G	H	B	J
HGBT 10-5	10	5.2	4.5	6.2	11	6	7	10	26
HGBT 10-6		6.5	4.5	6.2	11	6	7	10	26
HGBT 10-8		8.4	4.5	6.2	12	6	9	10	28
HGBT 10-10		10.5	4.5	6.8	15	8	11	11	33
HGBT 10-1 2		13	4.5	6.8	18	9	11	11	36
HGBT 16-5	16	5.2	5.4	7.1	12	7	7	12	30
HGBT 16-6		6.5	5.4	7.1	12	7	7	12	30
HGBT 16-8		8.4	5.4	7.1	12	7	7	12	30
HGBT 16-10		10.5	5.4	7.1	15	8	12	12	36
HGBT 16-1 3		13	5.4	7.1	17	11	13	12	39
HGBT 16-1 6		17	5.4	7.1	21	13	14	12	44
HGBT 25-6	25	6.5	6.8	8.8	13	7	7	12	30
HGBT 25-8		8.4	6.8	8.8	13	7	7	12	30
HGBT 25-10		10.5	6.8	8.8	15	10	11	13	38
HGBT 25-1 2		13	6.8	9.2	17	10	12	15	41
HGBT 25-1 6		17	6.8	9.2	21	13	14	15	47
HGBT 35-6	35	6.5	8.2	10.6	15.3	9	9	13.5	37
HGBT 35-8		8.4	8.2	10.6	15.3	9	9	13.5	37
HGBT 35-10		10.5	8.2	10.6	15.3	9	9	13.5	37
HGBT 35-1 2		13	8.2	10.6	15.3	10	12	13.5	41
HGBT 35-1 6		17	8.2	10.6	22	13	14	15	47
HGBT 50-6	50	6.5	9.5	12.4	17.8	9	10	17	42
HGBT 50-8		8.4	9.5	12.4	17.8	9	10	17	42
HGBT 50-10		10.5	9.5	12.4	17.8	9	10	17	42
HGBT 50-1 3		13	9.5	12.4	20	10	12	17	45
HGBT 50-1 4		14.5	9.5	12.4	22	15	15	18	54
HGBT 50-1 6		17	9.5	12.4	22	15	15	18	54
HGBT 70-8	70	8.4	11.3	14.6	21	11	11	18.5	47
HGBT 70-10		10.5	11.3	14.6	21	11	11	18.5	47
HGBT 70-12		13	11.3	14.6	21	11	11	18.5	47
HGBT 70-14		14.5	11.3	14.6	22	14	15	18.5	55
HGBT 70-16		17	11.3	14.6	26	14	16	18.5	56
HGBT 70-20		21	11.3	14.6	28	16	18	18.5	63
HGBT 95-8	95	8.4	13.5	17.4	25	12	13	21	53
HGBT 95-10		10.5	13.5	17.4	25	12	13	21	53
HGBT 95-12		13	13.5	17.4	25	12	13	21	53
HGBT 95-14		14.5	13.5	17.4	25	14	15	22	55
HGBT 95-16		17	13.5	17.4	25	14	16	22	56
HGBT 95-20		21	13.5	17.4	28	15	16	22	63
HGBT 120-8	120	8.4	15	19.4	28	13	14	23	60
HGBT 120-10		10.5	15	19.4	28	13	14	23	60
HGBT 120-12		13	15	19.4	28	13	14	23	60
HGBT 120-14		14.5	15	19.4	28	13	14	23	60
HGBT 120-16		17	15	19.4	28	16	16	23	64
HGBT 120-20		21	15	19.4	28	16	20	23	68

(All Dimensions in mm)