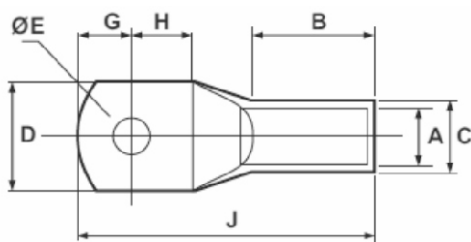


COPPER CABLE LUGS: STANDARD TYPE (ECO SERIES)

MATERIAL : ELECTROLYTIC HIGH CONDUCTIVITY COPPER

FINISH : ELECTRO TINNED

FEATURES : WITH OR WITHOUT INSPECTION HOLE



Product Ref.	Stud Hole E	Conductor Size mm ²	Dimensions mm						
			A	C	D	G+H	B	J	
HGCU-2.5	5.2	2.5	2	3.7	10	8	9	20	
HGCU-4	6.5	4	3.1	4.8	10	8	11	21	
HGCU-6	6.5	6	3.8	5.5	10	11	10	24	
HGCU-10	6.5	10	4.5	6.2	11	11	13	27	
HGCU-16:6	6.5	16	5.4	7.1	12	12	14	30	
HGCU-16:8	8.4						14	30	
HGCU-25:6	6.5	25	7	9	13	12	14	37	
HGCU-25:8	8.4						14	37	
HGCU-35:6	6.5	35	8	10	15	13.5	18	37	
HGCU-35:8	8.4					13.5	18	37	
HGCU-35:10	10.5					13.5	18	37	
HGCU-50:8	8.5	50	9.2	11.2	16	17	19	47	
HGCU-50:10	10.5					16	17	19	47
HGCU-50:12	13					18	17	22	48
HGCU-70:8	8.5	70	11.6	13.8	21	18.5	22	47	
HGCU-70:10	10.5					18.5	24	48	
HGCU-70:12	13					18.5	28	56	
HGCU-95:10	10.5	95	12.8	15.6	24	21	26	55	
HGCU-95:12	13					23	28	58	
HGCU-120:10	10.5	120	14.8	17.8	26	23	30	61	
HGCU-120:12	13					23	30	61	
HGCU-120:16	17					26	30	64	
HGCU-150:10	10.5	150	16	19.6	28	27	33	70	
HGCU-150:12	13					27	33	70	
HGCU-150:16	17					28	35	73	
HGCU-185:12	13	185	18	22	32	35	40	83	
HGCU-185:16	17					35	40	83	
HGCU-185:20	21					35	40	87	
HGCU-240:12	13	240	22	26	38	37	42	92	
HGCU-240:16	17					37	42	94	
HGCU-240:20	21					37	42	97	
HGCU-300:12	13	300	24	28.7	42	44	51	103	
HGCU-300:16	17					44	51	103	
HGCU-300:20	21					44	51	103	
HGCU-400:12	17	400	28	33.2	49	51	54	116	
HGCU-400:16	21					51	54		
HGCU-400:20						51	54		
HGCU-500:16	17	500	30	36	53	54	54	120	
HGCU-500:20	21					54	54	120	
HGCU-630:16	--	630	35	41.5	61	60	64	137	
HGCU-630:20						62	64	137	
HGCU-800--	--	800	39	46.3	67	75	75	165	
HGCU-1000--	--	1000	43	53.8	76	100	90	210	
HGCU-1200--	--	1200	47	61	85	120	90	230	

(All Dimensions in mm)