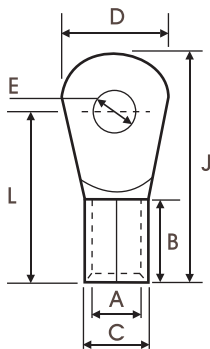


COPPER CABLE TERMINALS : RING TYPE (NON INSULATED)

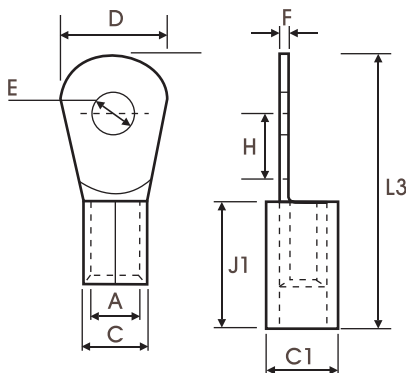
MATERIAL : ELECTROLYTIC HIGH CONDUCTIVITY-COPPER
FINISH : ELECTRO TINNED PLATED



Product Ref.	Size mm ²	Dimensions mm								
		E	A	C	D	F	B	H	L	J
HGR-7136	50	8.2	10.5	14.1	18	1.8	16	12	34	43
HGR-7138		10.2	10.5	14.1	24	1.8	16	14	36	48
HGR-7042		12.7	10.5	14.1	24	1.8	16	14	36	48
HGR-7139		16.2	10.5	14.1	32	1.8	16	15	38	54
HGR-7140	70	10.2	12	16	22	2	18	11	36	47
HGR-7043		12.7	12	16	22	2	18	11	36	47
HGR-7142		16.2	12	16	28	2	18	16	40	54
HGR-7144	95	10.2	13.5	18.1	24	2.3	20	12	38	50
HGR-7044		12.7	13.5	18.1	24	2.3	20	12	38	50
HGR-7045		16.2	13.5	18.1	28	2.3	20	17	44	58
HGR-7146	120	12.7	15	20.2	26	2.6	22	7	39	52
HGR-7148		20.3	15	20.2	40	2.6	22	20	52	72
HGR-7150	150	16.2	16.5	23.7	40	3.6	24	20	54	74
HGR-7046		20.3	16.5	23.7	40	3.6	24	20	54	74

COPPER CABLE TERMINALS : RING TYPE (INSULATED)

MATERIAL : ETP COPPER IS: 1897:1983
SURFACE : TIN PLATED



Product Ref.	Size mm ²	Dimensions mm								
		E	A	C	C1	D	F	J1	H	L3
HGRI-7052	1.5	2.2	1.6	3.2	4.8	6	0.8	10	4	16
HGRI-7053		2.6	1.6	3.2	4.8	6	0.8	10	4	16
HGRI-7054		3.2	1.6	3.2	4.8	6	0.8	10	4	16
HGRI-7055		3.7	1.6	3.2	4.8	6	0.8	10	4	16
HGRI-7056		4.2	1.6	3.2	4.8	6	0.8	10	4	16
HGRI-7062		5.2	1.6	3.2	4.8	6	0.8	10	5	17
HGRI-7066		6.4	1.6	3.2	4.8	10	0.8	10	6	18
HGRI-7068	2.5	3.2	2.3	3.9	5.5	6.5	0.8	10	3.5	14.5
HGRI-7069		3.7	2.3	3.9	5.5	6.5	0.8	10	3.5	14.5
HGRI-7071		4.2	2.3	3.9	5.5	8	0.8	10	5	17
HGRI-7072		5.2	2.3	3.9	5.5	8	0.8	10	5	17
HGRI-7074		6.4	2.3	3.9	5.5	10	0.8	10	7	18
HGRI-7077		8.2	2.3	3.9	5.5	12	0.8	10	9	21
HGRI-7079		8.2	2.3	3.9	5.5	16	0.8	10	10	22
HGRI-7080		10.2	2.3	3.9	5.5	16	0.8	10	10	22
									14	
HGRI-7085	4-6	4.2	3.5	5.5	7.1	10	1	14	5	22
HGRI-7086		5.2	3.5	5.5	7.1	10	1	14	5	22
HGRI-7089		6.4	3.5	5.5	7.1	12	1	14	6	22
HGRI-7090		8.2	3.5	5.5	7.1	12	1	14	6	22
HGRI-7094		8.2	3.5	5.5	7.1	14	1	14	10.5	26.5
HGRI-7095		9.7	3.5	5.5	7.1	14	1	14	10.5	26.5

(All Dimensions in mm)