

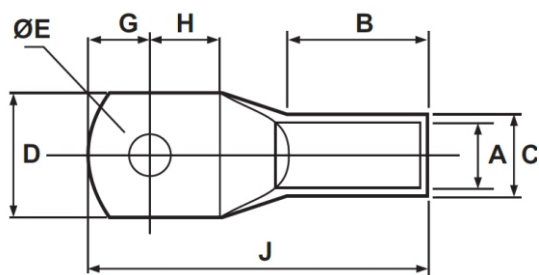
COPPER CABLE LUGS: STANDARD TYPE

STANDARD : BS 4579/IEC-61238-1:2003

MATERIAL : ELECTROLYTIC HIGH CONDUCTIVITY COPPER

FINISH : ELECTRO TINNED

FEATURES : WITH OR WITHOUT INSPECTION HOLE



Product Ref.	Stud Hole E	Conductor Size mm ²	Dimensions mm					
			A	C	D	G+H	B	J
HGSC-95:10	10.5	95	13.5	17.4	25	25	21	54
HGSC-95:12	12.5							
HGSC-95:14	15.0							
HGSC-120:10	10.5	120	15.0	19.4	28	27	24	61
HGSC-120:12	12.5							
HGSC-120:14	15.0							
HGSC-150:10	10.5	150	16.5	21.2	30	32	27	70
HGSC-150:12	12.5							
HGSC-150:14	15.0							
HGSC-185:10	10.5	185	18.5	23.5	34	37	32	81
HGSC-185:12	12.5							
HGSC-185:14	15.0							
HGSC-240:12	12.5	240	21.0	26.5	38	40	37	94
HGSC-240:14	15.0							
HGSC-240:16	17.0							
HGSC-300:12	12.5	300	23.5	30.0	43	43	44	101
HGSC-300:14	15.0							
HGSC-300:16	17.0							
HGSC-400:16	17.0	400	28.5	36.5	52	52	44	114
HGSC-400:20	21.0							
HGSC-400:B	-							
HGSC-500:16	17.0	500	30.0	39.0	56	56	48	130
HGSC-500:20	21.0							
HGSC-500:B	-							
HGSC-630:16	17.0	630	35.0	45.0	64	66	58	148
HGSC-630:20	21.0							
HGSC-630:B	-							
HGSC-630:16	17.0	630	35.0	41.5	61	50	70	144
HGSC-630:20	21.0							
HGSC-800:16	17.0	800	39.0	50.6	72.5	74	78	171
HGSC-800:20	21.0							
HGSC-800:B	-							
HGSC-1000:16	17.0	1000	43.0	56.2	78.5	...	90	201
HGSC-1000:20	21.0							
HGSC-1000:B	-							
HGSC-1200:16	17.0	1200	47.0	61.2	85	110	90	210
HGSC-1200:20	21.0							
HGSC-1200:B	-							

(All Dimensions in mm)